

Embracing The Challenges Through Partnership Working

Brought to you by:

Antonia Bridges

Flying Start Project Manager

Pam Daniels

Flying Start Health Coordinator

Kath Clarke

Flying Start Early Years Coordinator

Amber Constant

F/Start Basic Skills & Parenting Coordinator

Flying Start
 Project Manager

Admin
 Sc4 0.4
 Sc4 1.0
 Sc3 0.4
 Sc2 .6
 Sc2 .4

Health
 Co-ordinator

Basic Skills
 &
 Parenting
 Co-ordinator

Early Years
 Co-ordinator

Colcot
 1 DV Project
 Co-ordinator

PYP
 Gladstone
 Co-ordinator
 0.8

H.V. s
 6FTE

S&L
 Therapist
 .8

Dietetics
 .4

Midwives
 2 FTE

Ed Psych
 .5

Basic Skills
 Teacher
 .5 FTE

Worker
 Social

Advisory
 Teacher
 1 X FTE
 (agency)

Parenting
 Worker
 1 FTE

Early Years
 Practitioners
 3 X 37
 3 X 30
 1 X 18.75
 1X28

0.8 Crech
 Organiser
 2 X Crèche
 Workers
 10 hr
 contract

Cadoxton
 Methodist
 Playgroup
 Workers
 4X 0.5

Sessional
 Crèche
 Workers
 12

10 hr Male
 Perp.Prac
 1 Support
 worker

Learning
 Mentor .8
 PYP Crèche
 Workers
 3X16hrs

Option 2 Worker
 1 X FTE

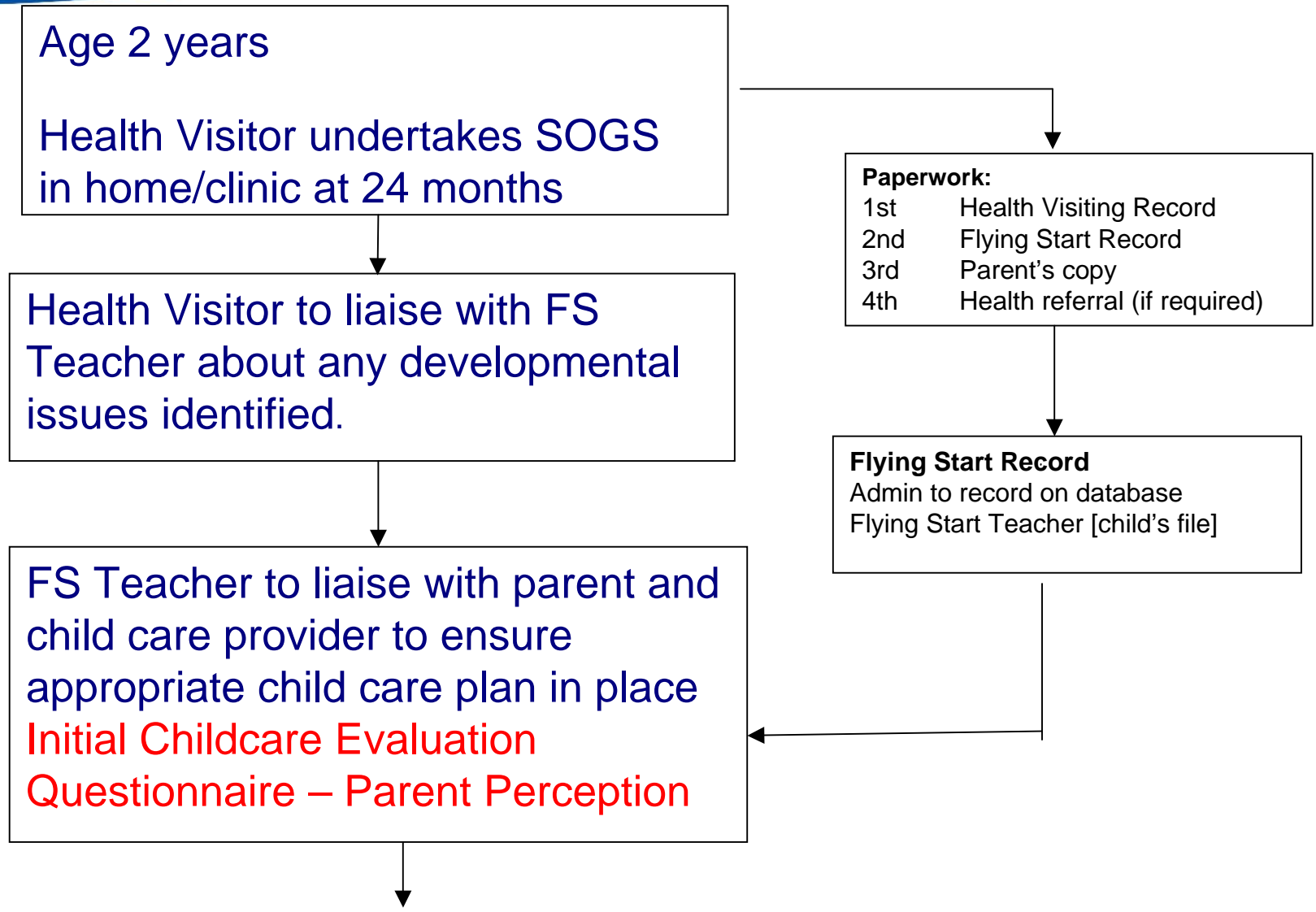
Library assistant .2

NCMA Network
 Co-ordinator .5

Flying Start – targeted support through

- Health Visiting (SOGS ii)
- Parenting
- Childcare
- Language and Play

SOGSII (1 of 2)



Age 3* - Health Visitor to undertake SOGS ii in home/clinic/childcare setting.

**to be undertaken at 35 months to ensure time to facilitate transfer to foundation phase*

FS Teacher to join HV for SOGS assessment where there is a known developmental issue.

Follow up Childcare Evaluation Questionnaires – Parent & Childcare Provider Perception

Paperwork:

- 1st Health Visiting Record
- 2nd Flying Start Record
- 3rd Parent's copy
- 4th Health referral (if required)

Flying Start Record

- i. Admin to record on database
- ii. Flying Start Teacher [child's file]

FS Teacher to liaise with identified school – information provided to provide support with ongoing development

Age 4 – FS Teacher to administrate Final Childcare Evaluation, School Perception following one full year in Foundation Phase.

Antenatal Care - Midwifery and Health Visiting Services (NBAS)

Baby Massage (0 – 6 months)

Incredible Years (Babies Series)

Incredible Years (Toddler Series)

You make the difference (6m–2½)

Midwife & S&L Therapist

Health Visitor & Parenting Worker

Health Visitor & Parenting Worker

S&L Therapist & Early Years

Nurturing Programme

Handling Children's Behaviour

Incredible Years (2½ to 7 years)

Parenting & Early Years

Parenting & Early Years

Parenting & Early Years

Summary

A multi agency, multi disciplinary service

- One integrated team
- One building
- One point of contact for families